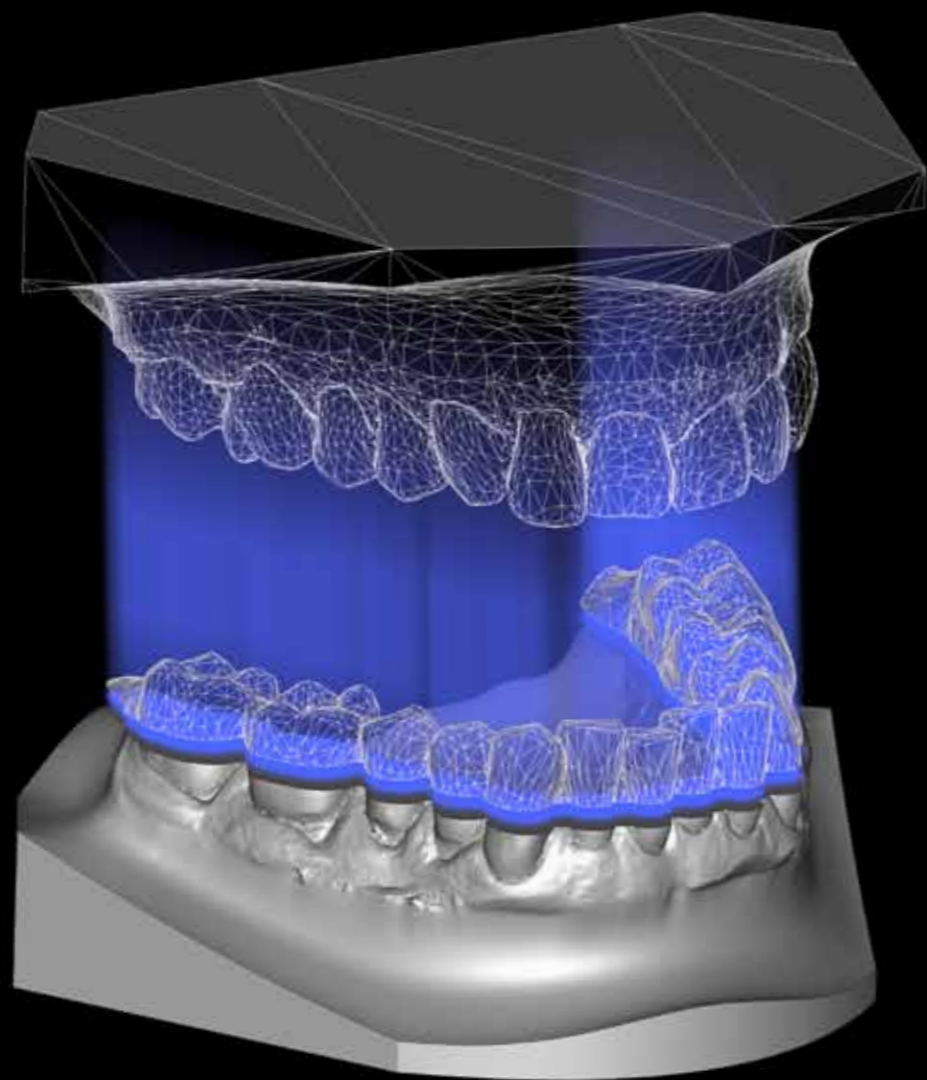




Print@Dreve
We print it.





Generative Models. We guarantee latest industrial standards.

At present Print@Dreve is the only „made in Germany“ service offer for generatively manufactured dental models. High performance printers stand for superior industrial standards with regard to precision, quantities per building platform, material selection and flexibility in technical process adaptation. As the entire workflow, which also comprises cleaning and final curing of the models, is permanently refined, and for the fact that the company's department for Research and Development is constantly working on innovations and further developments, Print@Dreve persistently provides the detail precision, which is crucial for dental models, at rather favorable unit prices. The smooth implementation of processes is safeguarded by the highly skilled technical support of Dreve Dentamid GmbH. The open system provides for maximum flexibility with regard to the selection of intra-oral scanners and the corresponding software. The whole process is carried out in the Unna factory so that the models are sent out within 48 hours.

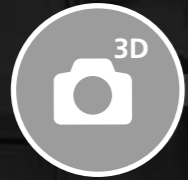
From Scan to Model.



1

Register at www.print.dreve.de

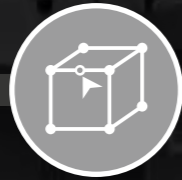
It only takes 2 minutes to fill in the customer data form.



2

Scan

Intraoral scans or model scans, both possible.



3

Design your data

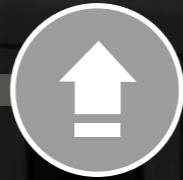
Find the basic prerequisites for the formats at www.print.dreve.de.



4

Login www.print.dreve.de

You will receive your access data for the ordering portal from us by E-Mail.



5

Your STL upload until 12.00 noon

Your model is ready for dispatch the following day.



6

Data import and internal monitoring

We closely control each file before manufacturing.



7

Model production (overnight)

Layer manufacturing on rapid prototyping production units.



8

Final cleaning and post curing

Long lifetime for your models.



9

Quality control

We only dispatch models coming up to our quality demands.



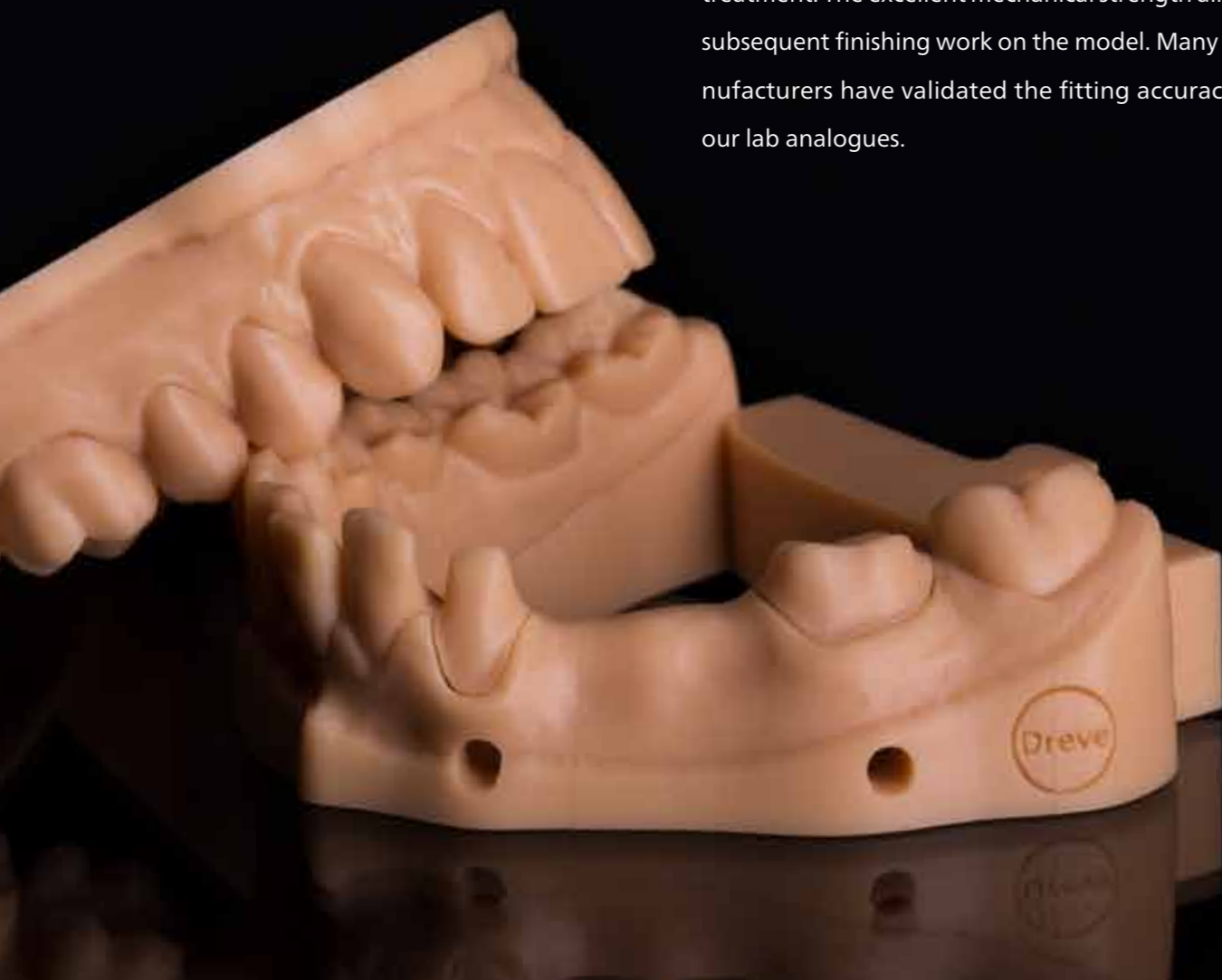
10

Dispatch

After thorough packing by hand your model is sent out.

Prosthetics Models

Building the basis for a fitting denture, the precision of prosthetics models – just like the gingiva mask and the removable stubs – are decisive for a successful treatment. The excellent mechanical strength allows subsequent finishing work on the model. Many manufacturers have validated the fitting accuracy of our lab analogues.



Dental model quarter
upper jaw + lower jaw 18,90 €



Dental model full arch
upper jaw + lower jaw 25,90 €




Gingiva mask
from 9,50 €



Implant holes
from 1,50 €



Stub / preparation
extra 1,95 €

 All prices net, plus freight, packaging, insurance and VAT. Dispatch information can be checked online.

Orthodontic models

A validated manufacturing process, industrial standards with regard to machines and production procedures: We supply the highest precision of diagnostic and orthodontic models available in the market. Thanks to optimized mechanical characteristics our models are useable for repeated thermoforming processes and also for finishing works.



Orthodontic model with plinth	
upper jaw	21,00 €



Orthodontic model with plinth	
lower jaw	21,00 €



Orthodontic model with plinth	
upper jaw + lower jaw	39,90 €




Orthodontic model	
upper jaw	16,00 €



Orthodontic model	
lower jaw	16,00 €

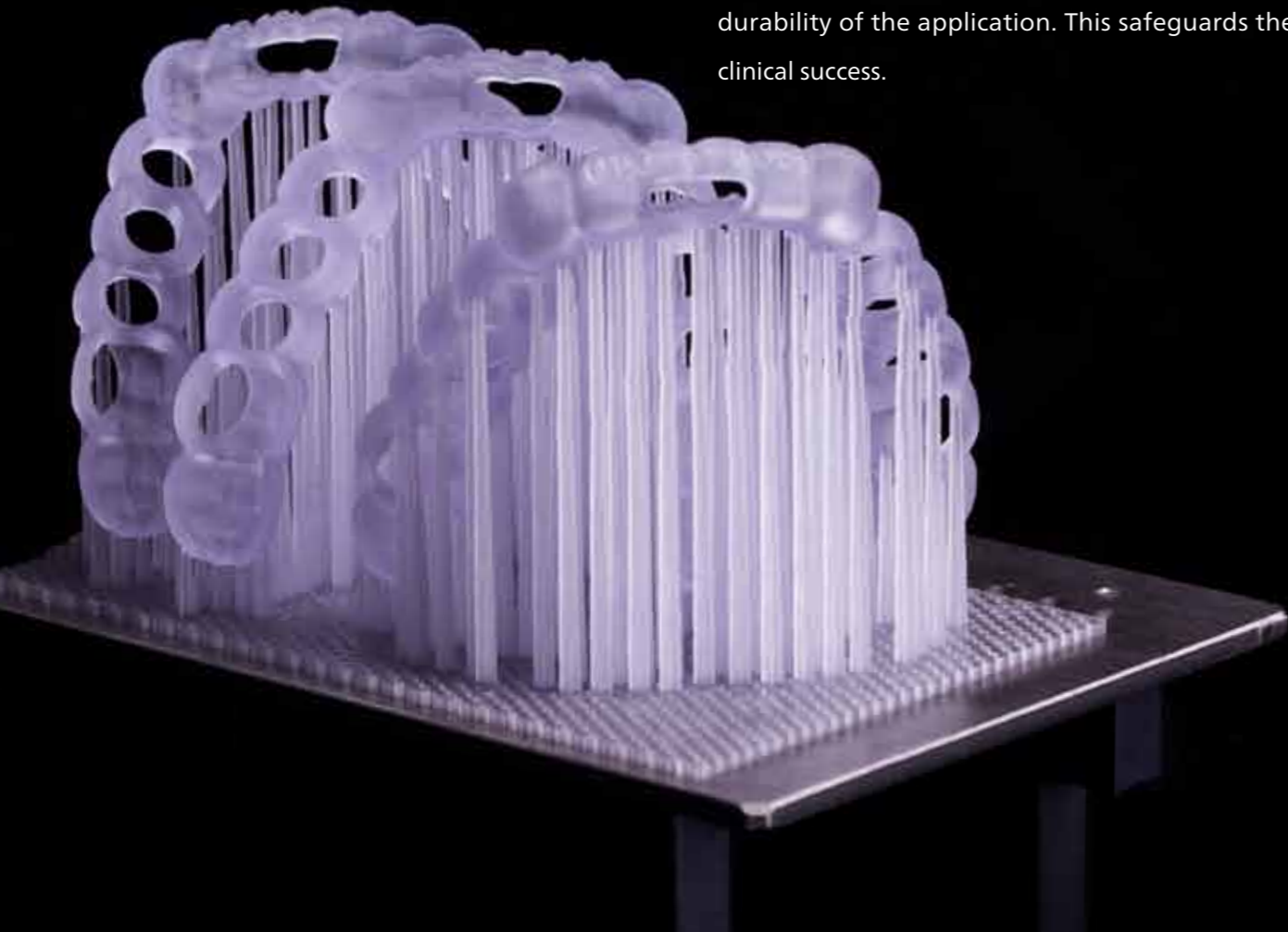


Orthodontic model	
upper jaw + lower jaw	31,00 €

 All prices net, plus freight, packaging, insurance and VAT. Dispatch information can be checked online.

Medical Devices

Complex geometrics with the best possible precision – self evident also for medical devices. Our ISO certified resins were especially developed for the application in the patient’s mouth. The validated manufacturing process ensures mechanics, biocompatibility and durability of the application. This safeguards the clinical success.



Precision

Enhancement of the accuracy of fit through use of high resolution production units

ISO 13485

Certainty provided by a certified manufacturer and biocompatible materials




Drill guide

from 92,00 €



Occlusal splint

99,00 €

 All prices net, plus freight, packaging, insurance and VAT. Dispatch information can be checked online.

Register now!
www.print.dreve.de



Dreve Dentamid GmbH
Max-Planck-Straße 31
59423 Unna/Germany
Hotline: +49 2303 8807-40
www.print.dreve.de