

CONLIGHT » Unique Modelling Material for Direct Use in Mouth «

Conlight is a light-curing composite gel which has been developed for universal modelling directly in mouth. Much more comfortable to work, because of its one-component presentation, amongst other two-component materials (powder and liquid)

blocking ... fixing ... modelling

- ▶ Authorised medical device class IIa product
- ▶ Easy application (thixotropic); huge time savings
- ▶ Odourless and tasteless ; biocompatible (MMA free)
- ▶ Hardens quickly with all standard dental hand lamps
- ▶ After polymerisation the material can easily be processed
- ▶ It is very hard, i.e the burs do not block drills
- ▶ Working with this material is pleasant for patient and dentist thanks to the convenient syringes application
- ▶ Burns out completely without leaving residues
- ▶ Its fluorescent yellow effect makes it more visible

Application areas

- ▶ Universal modelling in mouth (stops, post etc.)
- ▶ Implant abutments splinting directly in mouth in order to ensure better results during impression-taking
- ▶ Metallic parts fixing in mouth
- ▶ Pleasant for patient, dentist and dental technician



3 syringes of 3 g
9 cannulas



Kiero Handlight



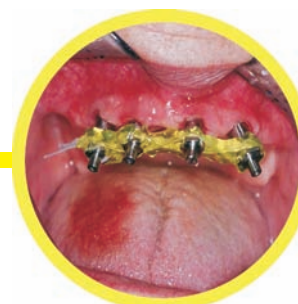
Extremely precise post construction in mouth



Quick light curing
in mouth



Metalstructure blocking
in mouth



Posts impression splinting for implant works