



Smart And Quick Repairs With Light Cured Denture Resin

Acrifix is a light cured denture repair resin which enables both, dentist and technician to rapid repairs on acrylic dentures. Whether fixing of fractures, broken off teeth, immediate dentures or contouring gracile papilla structures on implant hybrids - Acrifix is the versatile helper in the dental practice and laboratory. In regard of biocompatibility the material is free of MMA.

Application of Acrifix is smart and easy since a silicone matrix is not

Application at a glance

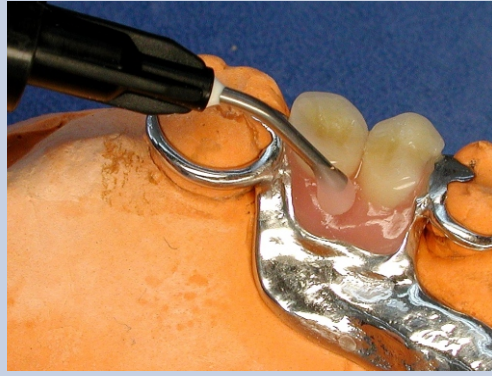
- Quick repairs of broken off teeth or fractured dentures
- Correction of bubbles, pores, cracks
- Completion of small saddles
- Fabrication of immediate dentures
- Gracile contouring of gingiva parts on partial and implant dentures

necessary. Long curing times are a thing of the past as well.

On repairing or fixing acrylics a provided light cured bonder is applied to guarantee an adequate bonding strength between the materials. Afterwards, Acrifix is applied sparingly with the aid of the provided disposable canulas.

Curing

Except LED all standard curing units can be used with Acrifix. The time may vary due to the utilised devices. Strobe lamps need 3 min, halogen lamps 10 min. for instance. Curing the material with handheld UV or plasma lamps (without filter) in the practice is possible, too.



Working out and finishing

Acrifix can easily be trimmed and polished with conventional rotary instruments after curing. Optional the paint-on of a light cured glaze is possible as well.

Shades

The resin is available in two different gingiva shades. Acrifix *Light-pink* is used for translucent and light shades, Acrifix *pink* fits perfect to more opaque and full-bodied denture bases.

An A 3 and incisal mass completes the range and enable to repair i.e. chipped facings very quick and effectively.

More Flexibility

The use of Acrifix increases the flexibility of all parties enormously. On small repairs the dentist can satisfy the needs of its patients without a long waiting time and releases the laboratory. Technicians appreciate uncomplicated working without using a time-consuming powder/liquid resin.

Conclusion

The material convinces in everyday life due to its unique features and enhances working quality and patient's satisfaction in dental practices as well as laboratories. Once utilized, Acrifix will not be set aside.



Acrifix is available at:



c/ Isabel Colbrand, Nave 147
E-28050 Madrid-España
Tel: + 34 917362317
Fax: +34 917362318
info@kuss-dental.com
www.kuss-dental.com

Manufacturer:

DeltaMed
www.deltamed.de