

CONLIGHT » Unique Modelling Material for Direct Use in Mouth «

Conlight is a light-curing composite gel which has been developed for universal modelling directly in mouth. Much more comfortable to work, because of its one-component presentation, amongst other two-component materials (powder and liquid)

blocking ... fixing ... modelling

- Authorised medical device class IIa product
- Easy application (thixotropic); huge time savings
- Odourless and tasteless ; biocompatible (MMA free)
- Hardens quickly with all standard dental hand lamps
- After polymerisation the material can easily be processed
- It is very hard, i.e the burs do not block drills
- Working with this material is pleasant for patient and dentist thanks to the convenient syringes application
- Burns out completely without leaving residues
- Its fluorescent yellow effect makes it more visible

Application areas

- Universal modelling in mouth (stops, post etc.)
- Implant abutments splinting directly in mouth in order to ensure better results during impression-taking
- Metallic parts fixing in mouth
- Pleasant for patient, dentist and dental technician



3 syringes of 3 g
9 cannulas



Kiero Handlight



Extremely precise post construction in mouth



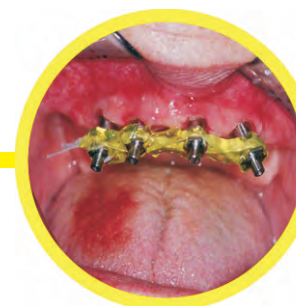
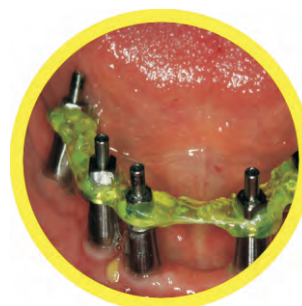
Quick light curing
in mouth



Metalstructure blocking
in mouth



Posts impression splinting for implant works



Scan the QR to see the video